

Urban land with license and construction project in SA CARROCA



Price: 550.000 €

GENERAL INFORMATION

Property Ref:	CW-ENZ-55	Category:	Villas, Land
Location:	Sa Carroca	Area:	Sa Carroca
N. Bedroom:	4	N. Bathroom:	4
M ² Property:	526	M ² Inside:	238

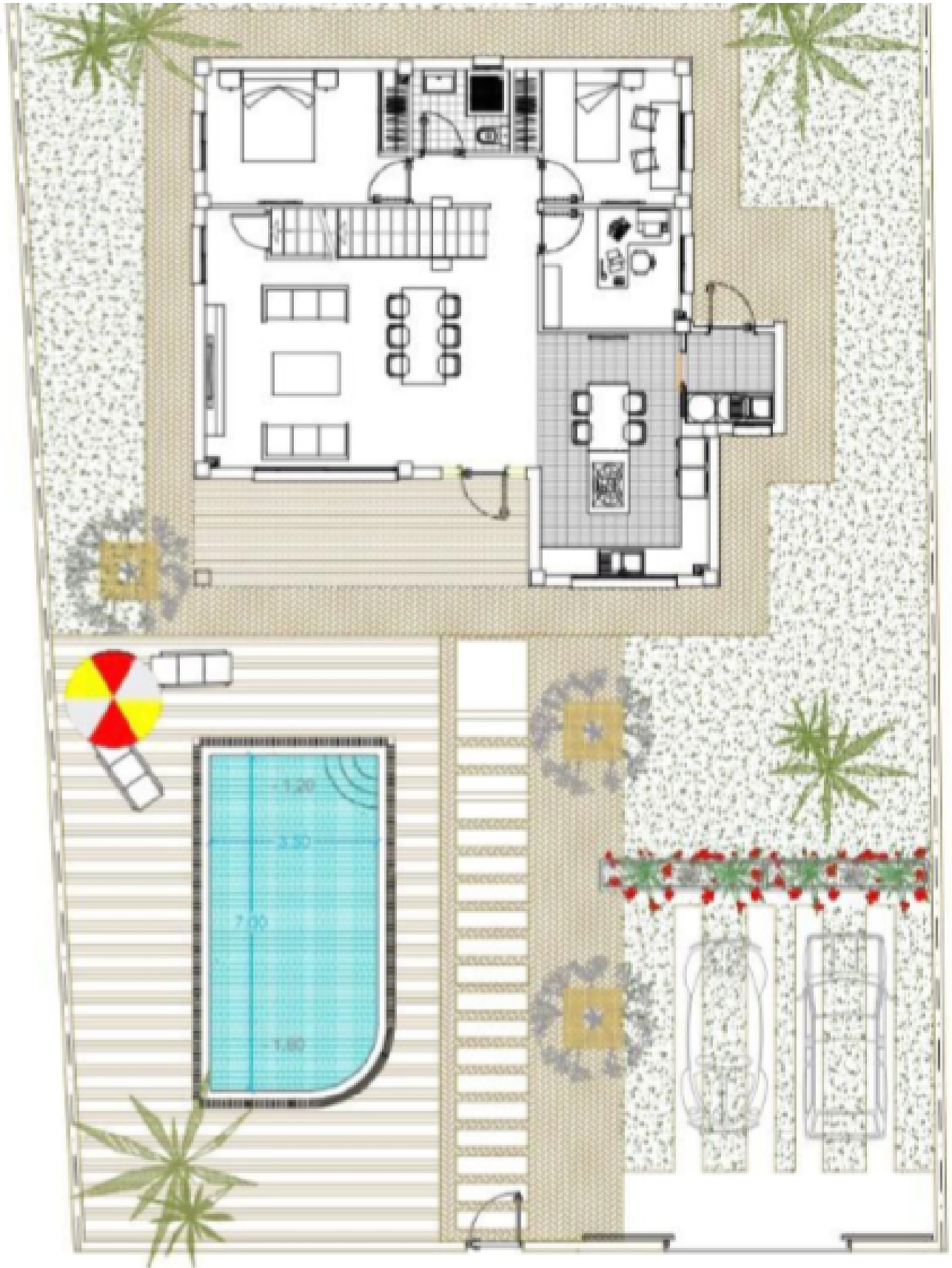


This property is not for sale until the energy certificate has not been submitted.

DESCRIPTION

Urban land with license and construction project. Detached house on two floors plus basement. Flat plot in expanding urbanization, new construction of villas for families on the island. With services such as supermarket, nursery, sports facilities. The mountain at 5 min, airport at 7 min. The village of Sant Jordi at 3 min, the beach at 10 min. bus stop 3 min. A great opportunity in strategic area.







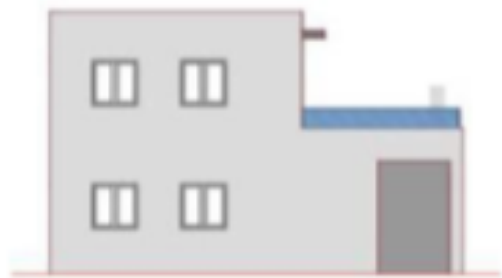
FACHADA PRINCIPAL



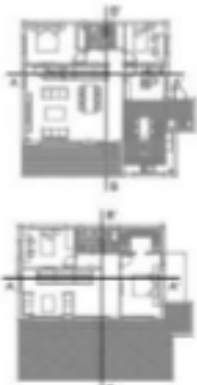
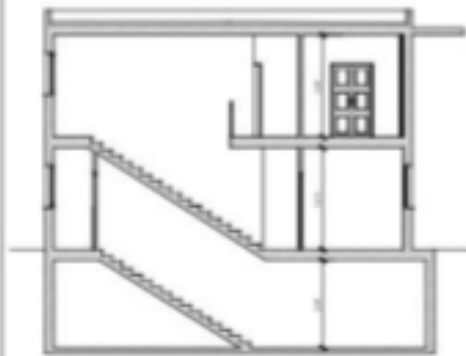
FACHADA LATERAL DERECHA

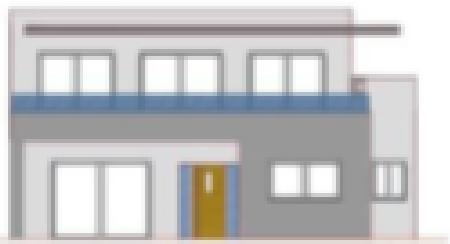


FACHADA TRASERA

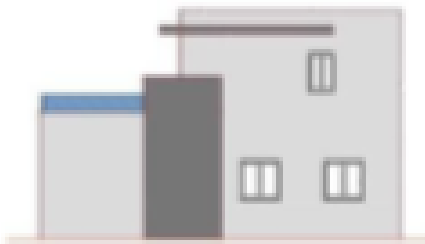


FACHADA LATERAL IZQUIERDA

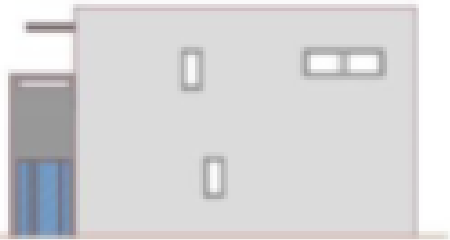




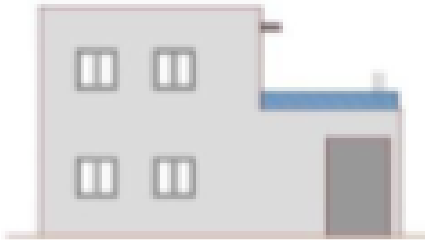
FACIADA PRINCIPAL



FACIADA LATERAL DERECHA



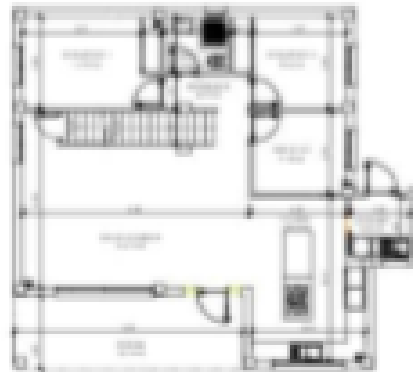
FACIADA IZQUIERDA



FACIADA LATERAL IZQUIERDA



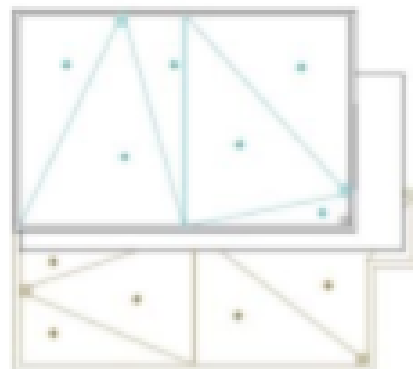
PLANTA PRINCIPAL



PLANTA PRIMERA



PLANTA SEGUNDA



CUBIERTA

SUPERFICIES UTILES POR HABITACULOS	
Sotano	55,00 m2
TOTAL SOTANO	55,00 m2
Porche	7,88 m2
Salon-comedor	31,21 m2
Cocina	16,53 m2
Lavadero	3,44 m2
Distribuidor	4,20 m2
Baño 1	3,44 m2
Dormitorio 1	11,78 m2
Dormitorio 2	9,06 m2
Despacho	7,18 m2
TOTAL PLANTA BAJA	94,72 m2
Estar	26,48 m2
Dormitorio principal	12,58 m2
Vestidor	4,88 m2
Baño 2	5,22 m2
Dormitorio 3	10,58 m2
TOTAL PLANTA 1ª	59,74 m2
TOTAL	154,46 m2
Terraza	46,44 m2

SUP. CONSTRUIDA PLANTA BAJA	113,30 m2
SUP. CONSTRUIDA PLANTA PRIMERA	70,33 m2
SUP CONSTRUIDA SOBRE RASANTE	183,66 m2
SUP CONSTRUIDA BAJO RASANTE	63,29 m2
SUPERFICIE TOTAL CONSTRUIDA	240,69 m2



Ctra, Jesus 101, Edif Centro, Planta Baja, Local 5,
07819 Jesus, Ibiza, Spain

Phone: +34 604 190 540 / 871 030 774

E-Mail: info@cw-ibiza.de

Website: www.cw-ibiza.de
