

Impressively beautiful and idyllic finca overlooking the sea Near Santa Eulalia Ibiza



Price: 1.300.000 €

GENERAL INFORMATION

Property Ref:	CW-DIR-26	Category:	Finca
Location:	Cala Llonga	Area:	Santa Eulalia
N. Bedroom:	3	N. Bathroom:	3
M ² Property:	1400	M ² Inside:	210



This property is not for sale until the energy certificate has not been submitted.

DESCRIPTION

Here the dream of an idyllic finca in the countryside comes true. Just the thing for nature lovers! A wellness oasis where you can let your soul dangle, overlooking the sea and the golf club of Roca Llisa with approx. 166m² living space + approx. 45.85 m² terrace (50% = 22.91 m²) + approx. 10 m² casita + approx. 10 m² pool warehouse (total approx. 210 m²).

Special highlight are about 100 Sabinas as ceiling bearer. 1400 m² of [land](#), partially surrounded by a magnificent oleander hedge with neat

mediterranean palm garden, olive, apricot and nectarine trees.

The sunrise awaits you every day. In the morning you can get up for breakfast on the terrace under the gentle rays of the morning sun. Isn't that heavenly? But also the sunset is magical in this property!

Light from Santa Gertrudis (painter's light) from the patio.

2 double bedrooms, own shower rooms / WC

Dining room with stunning views for 6-8 people

Living room with comfortable furnishings and open fireplace

1 separate apartment / studio, double bedroom, en suite shower room / WC, fully furnished majolica kitchenette

All bedrooms with separate access to the private terrace.

Majolica - Kitchen, Fully Furnished, Dishwasher, Gas Stove, Pool View & Exit Patio

Air conditioning in the main rooms available

Covered closed garage, access to utility room (washing machine, dryer)

2 additional parking spaces, 1 parking space in front of the garage, 1 parking space in front of the property

50 m3 cistern (under the partly covered patio):

Use as garden water or emergency stock; reliable and constant water supply through the local network (separate circuits)

5 partially covered terraces and patio with a small fireplace (can be used as a barbecue)

Pool level with pool (4 x 8m, 1-2 m depth) and pool house, complete outdoor kitchen (hot water, grill / fireplace, music system etc.), table, sun loungers, sunshade, parasols and tree shower

A few steps from the pool level covered seating for 6 people

opposite another idyllic seating for 8-10 people under a wonderful old palm tree

walk-in roof (outside staircase), 2014/2015 completely renovated

perfect security through video-controlled wrought-iron gate, tasteful wrought-iron window bars, alarm system, motion detectors, outdoor and pool lighting (can be switched separately), property completely fenced and almost secluded.

The property was completely painted in 2016 with special paint (Euromur), including the woods and lattice.

Distances:

[Santa Eulària](#) 8 min

Ibiza Town 20 min

Nearest [beach](#) 5 min

Airport 30 min

Golf course 10 min

Santa Gertrudis 20 min























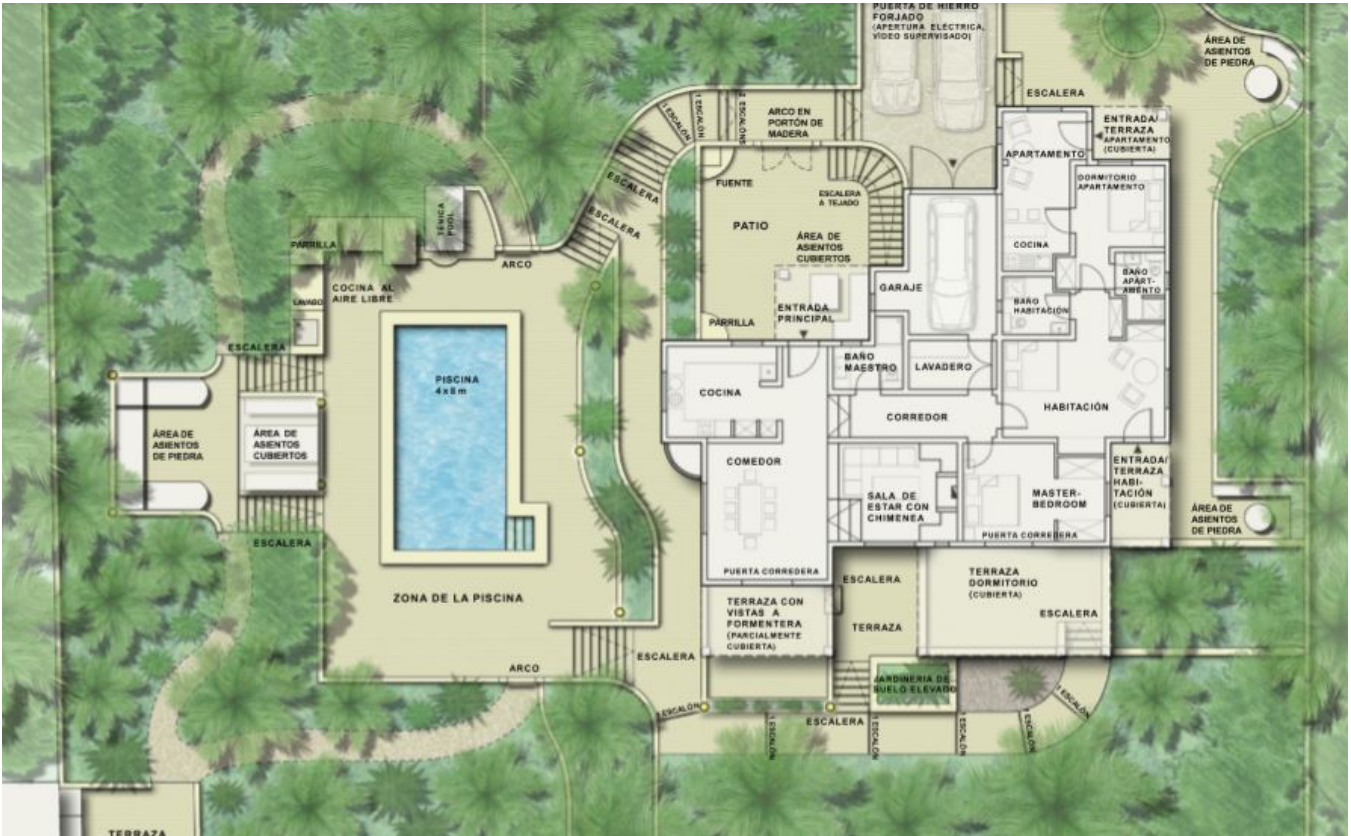






























Ctra, Jesus 101, Edif Centro, Planta Baja, Local 5,
07819 Jesus, Ibiza, Spain

Phone: +34 604 190 540 / 871 030 774
E-Mail: info@cw-ibiza.de
Website: www.cw-ibiza.de