

Modern chalet with panoramic sea views to Es Vedra and touristic rental license



Price: 3.300.000 €

GENERAL INFORMATION

Property Ref:	CW-DOM-33	Category:	Villas, Luxury Houses
Location:	Cala D'Hort	Area:	Cala d Hort
N. Bedroom:	5	N. Bathroom:	4
M ² Property:	4000	M ² Inside:	358



This house has an energy certificate and can be visited.

DESCRIPTION

This [luxury](#) villa affords spectacular panoramic views towards Es Vedrá as well as the sundown. It is located in a peaceful area, on a hillside stretching between Cala Carbó and Cala D'hort, in an extraordinary and very privileged spot.

The total living area of 358 m² is divided into 4 very spacious and bright double rooms and 3 bathrooms. The separate kitchen has a pantry, a small step separates the kitchen from the bright living and dining area.

The large terraces offer several retreat possibilities, also covered and natural a view to melt away. As the day slowly draws to a close, you can enjoy a magical sunset. Life can be so beautiful!

The outdoor barbecue area is very inviting and offers an outdoor dining area. You can easily park 2 cars on the private parking lot.

The [villa](#) has a water cistern, an alarm system, air conditioning (hot and cold) and underfloor heating. Thus, this beautiful house is suitable for all seasons and an ideal investment , as it has an official Touristic Rental License.

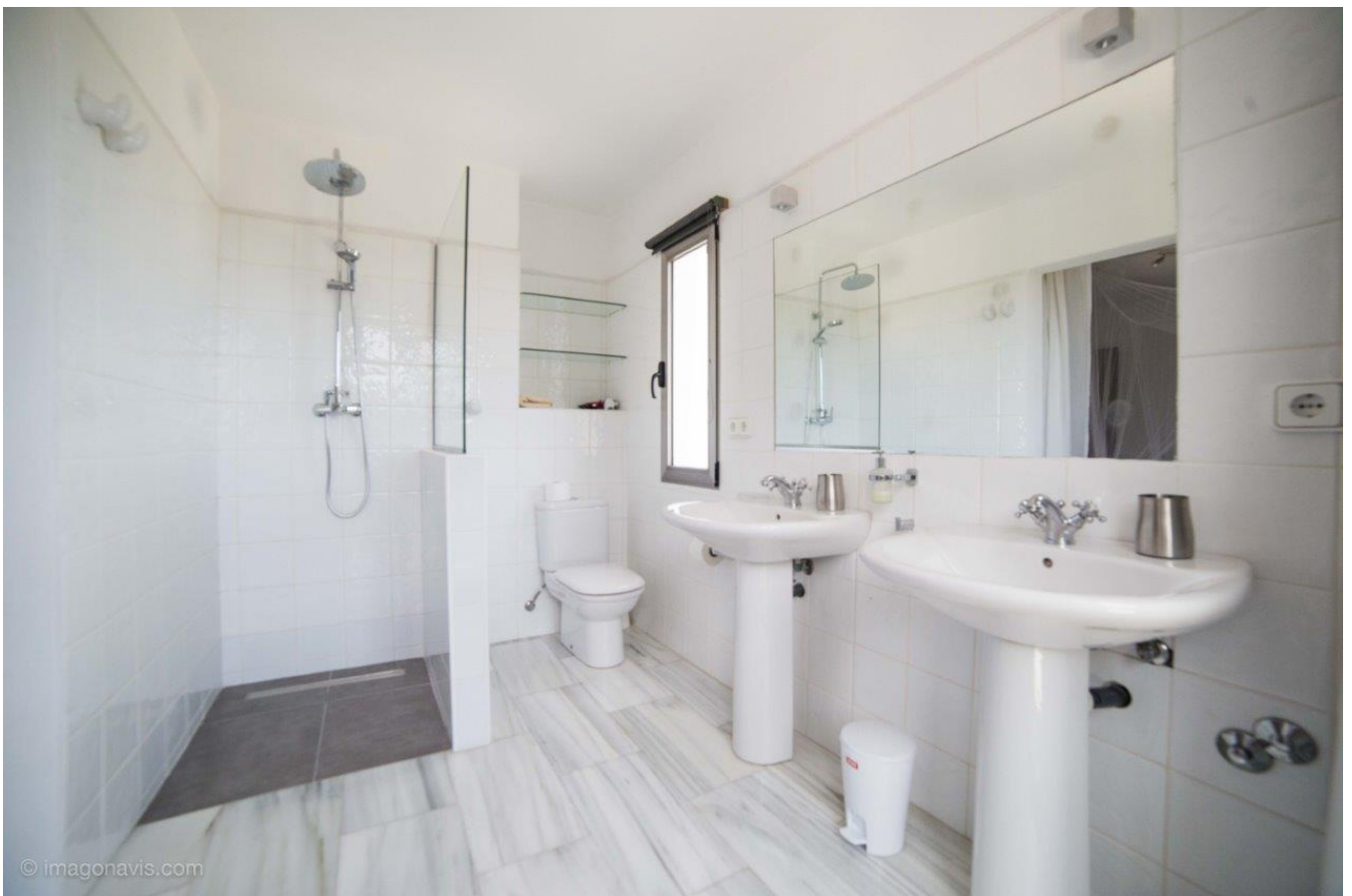


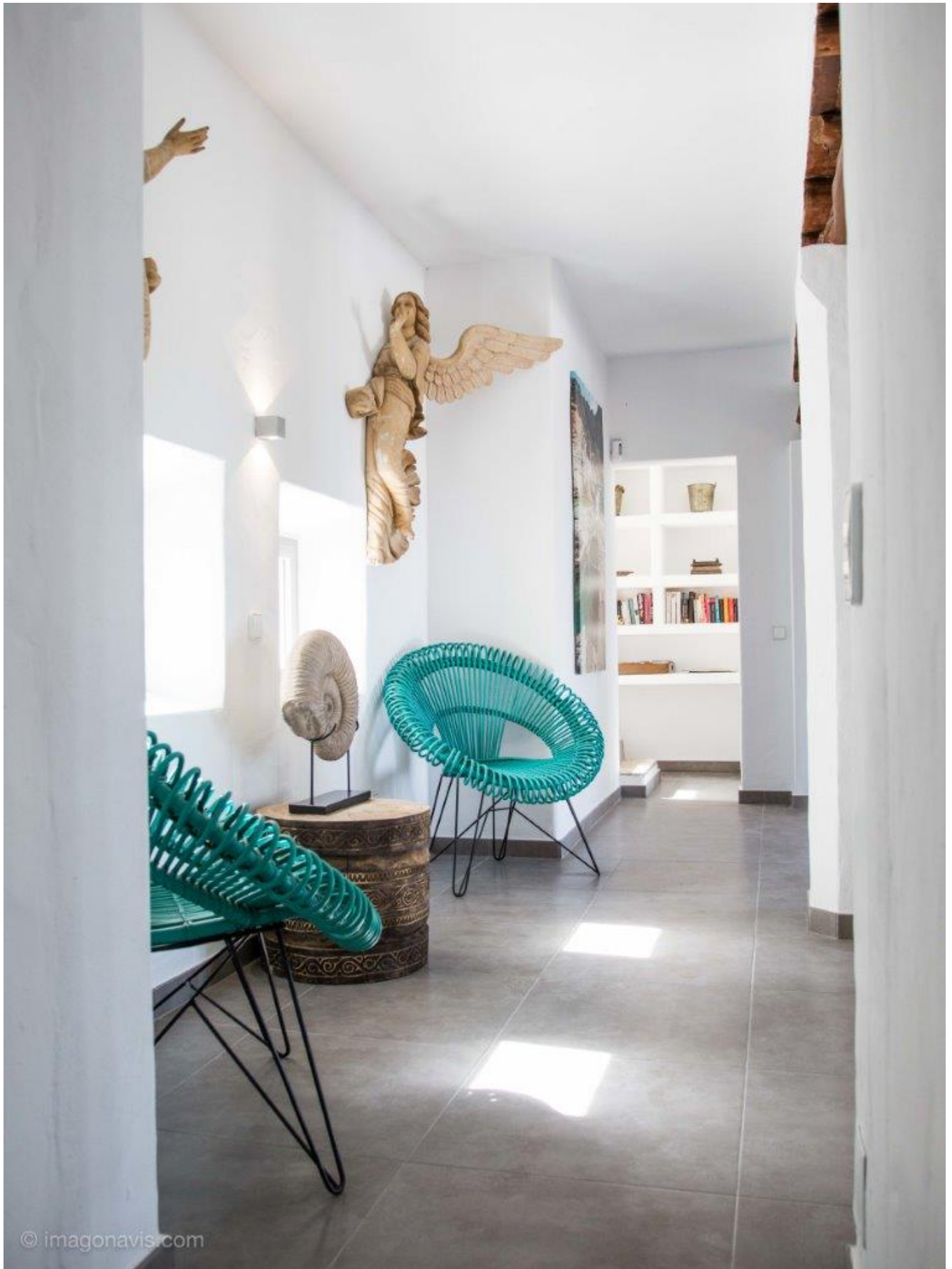












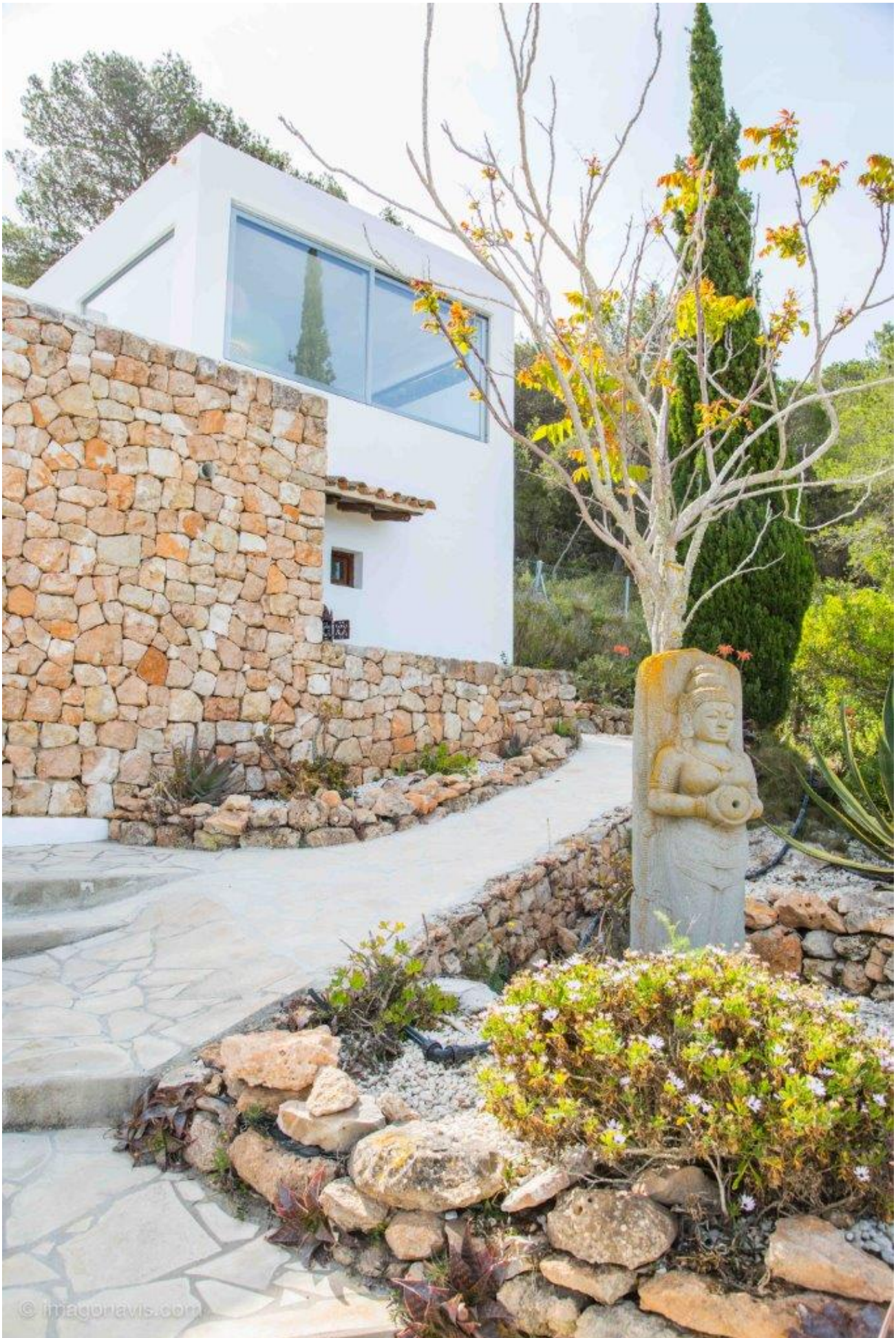
© imagonavis.com













Ctra, Jesus 101, Edif Centro, Planta Baja, Local 5,
07819 Jesus, Ibiza, Spain

Phone: +34 604 190 540 / 871 030 774

E-Mail: info@cw-ibiza.de

Website: www.cw-ibiza.de
