

Urban plot with license and construction project in Sa Carroca



Price: 750.000 €

GENERAL INFORMATION

Property Ref:	CW-N-F-95	Category:	Land
Location:	Sa Carroca	Area:	Sa Carroca
N. Bedroom:	5	N. Bathroom:	5
M ² Property:	1142	M ² Inside:	294



This property is not for sale until the energy certificate has not been submitted.

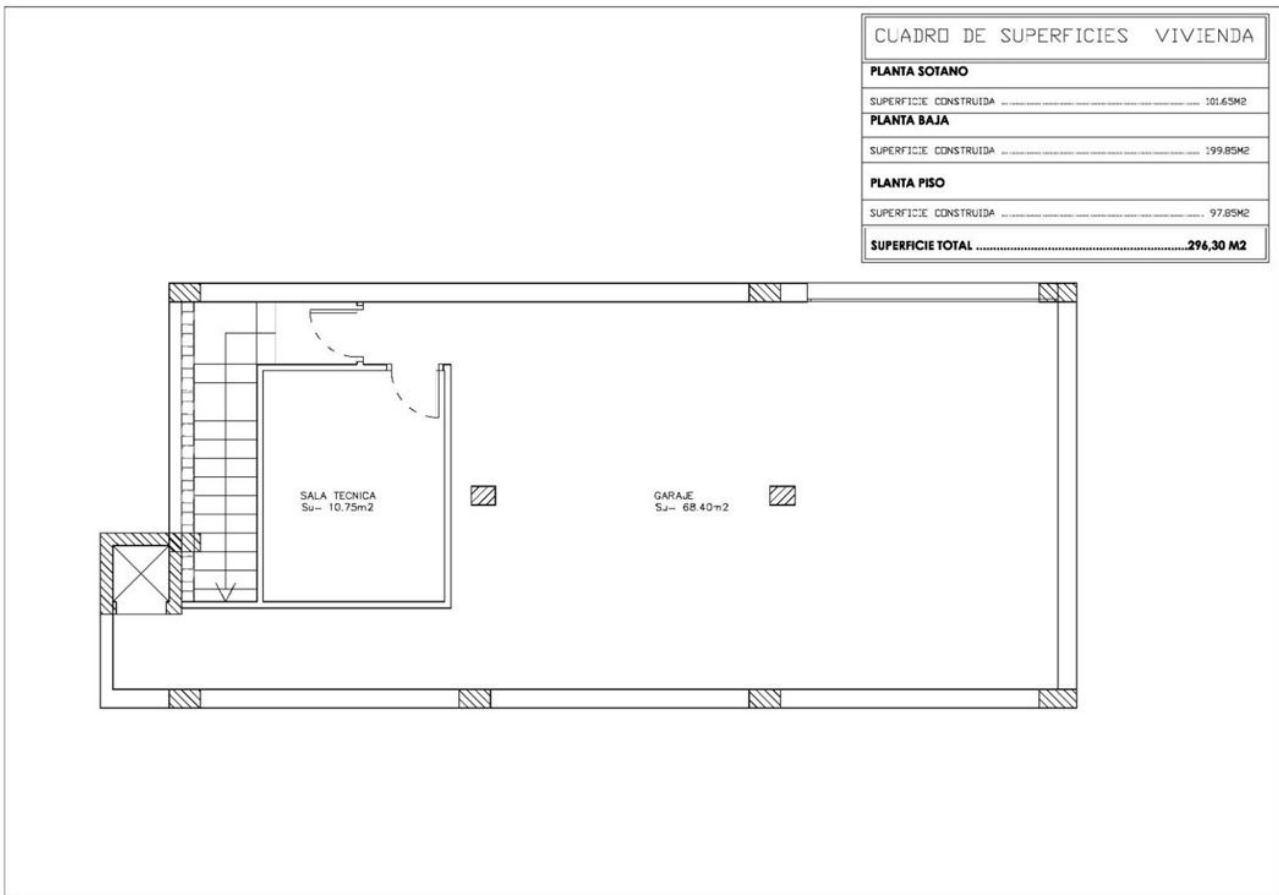
DESCRIPTION

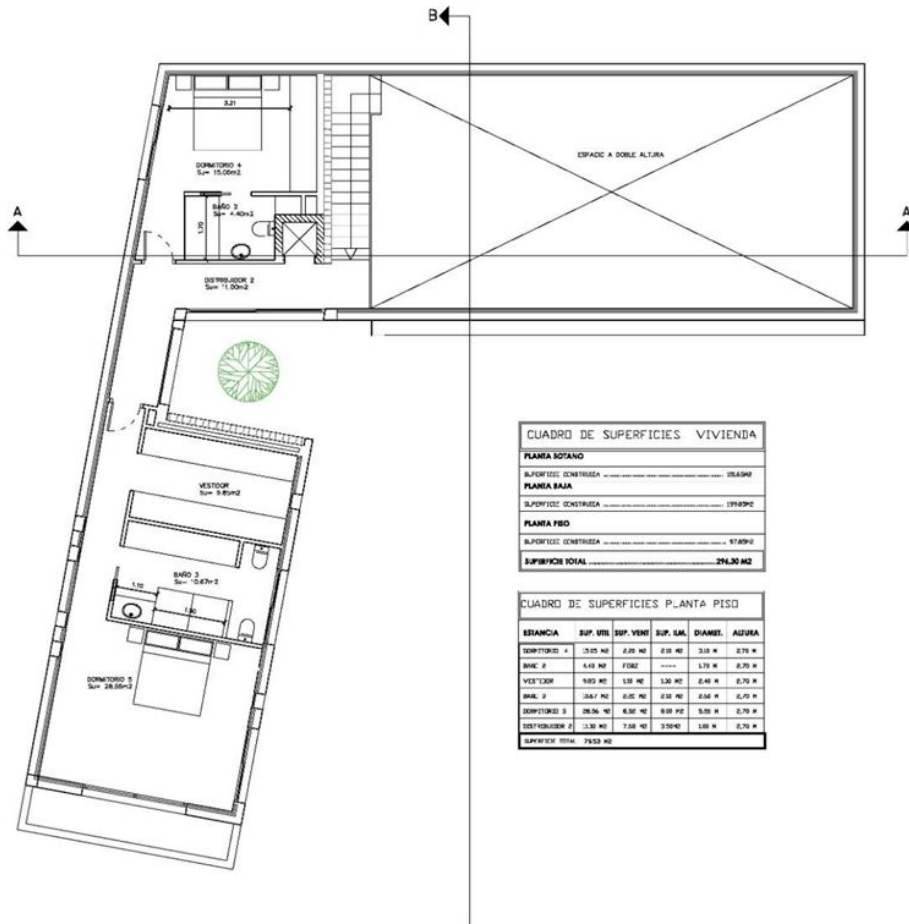
Urban plot with license and construction project in Sa Carroca. Villa on two floors plus basement. Flat plot in growing urbanization, new villas for families on the island. With services such as supermarket, kindergarten, sports facilities. The mountain at 5 min, airport at 7 min. The city of Sant Jordi 3 minutes, the beach 10 minutes. Bus stop 3 min. A great strategic opportunity.





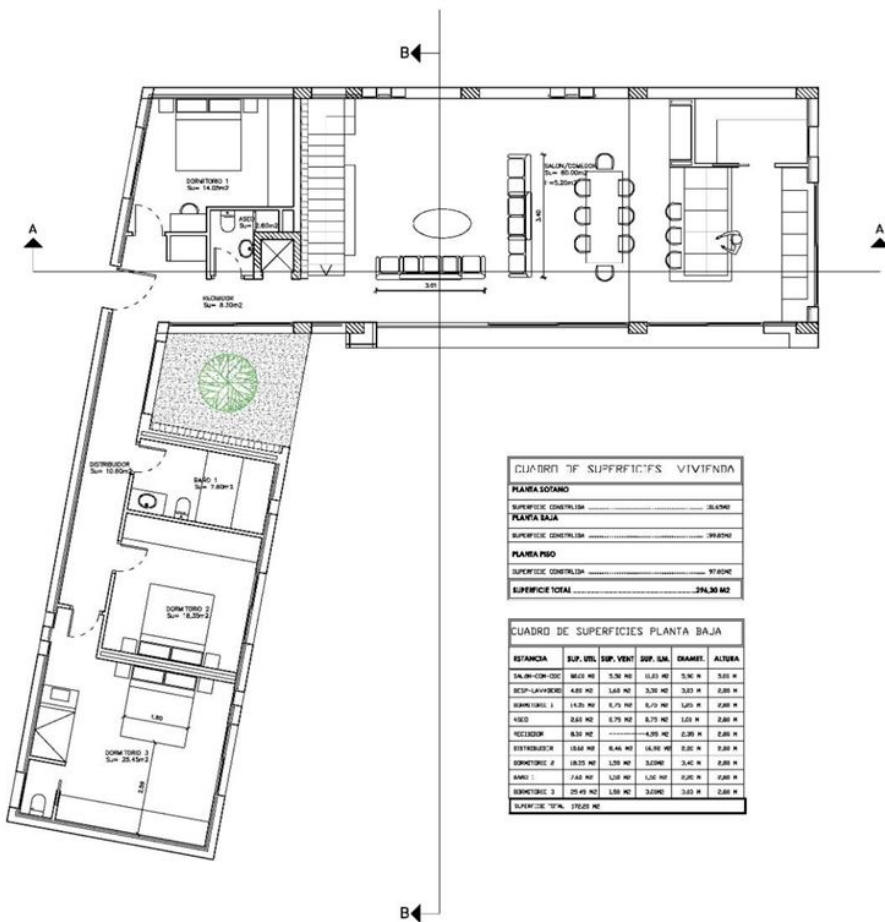






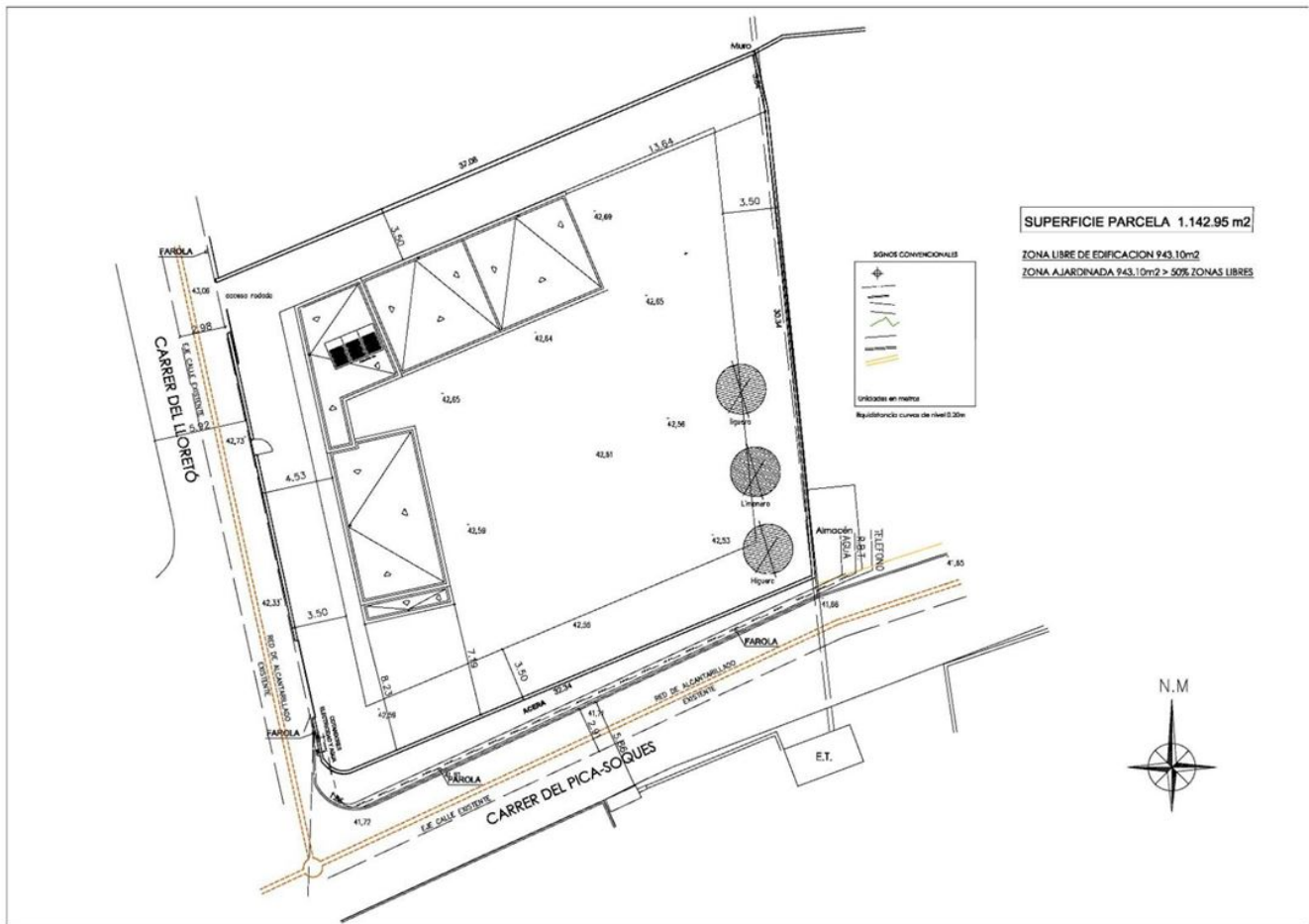
CUADRO DE SUPERFICIES VIVIENDA	
PLANTA SEGUNDO	
SUPERFICIE CONSTRUIDA	25.84M ²
PLANTA BAJA	
SUPERFICIE CONSTRUIDA	179.89M ²
PLANTA PISO	
SUPERFICIE CONSTRUIDA	97.69M ²
SUPERFICIE TOTAL	294.30 M²

CUADRO DE SUPERFICIES PLANTA PISO						
ESPANCHA	SUP. UTIL	SUP. VENT	SUP. U.M.	DIAMET.	ALTURA	
DORMITORIO 4	15.00 M ²	2.00 M ²	0.00 M ²	3.00 M	2.70 M	
BAÑO 2	4.40 M ²	7.00 M ²	0.00 M ²	1.70 M	2.70 M	
VESTIDOR	9.83 M ²	1.00 M ²	1.00 M ²	2.40 M	2.70 M	
BAÑO 3	5.67 M ²	0.00 M ²	0.00 M ²	2.00 M	2.70 M	
DORMITORIO 3	28.36 M ²	0.00 M ²	0.00 M ²	3.00 M	2.70 M	
DISTRIBUCION 2	11.00 M ²	7.00 M ²	3.00 M ²	1.00 M	2.70 M	
SUPERFICIE TOTAL	79.23 M²					



CUADRO DE SUPERFICIES VIVIENDA	
PLANTA SEGUNDO	
SUPERFICIE CONSTRUIDA	25.84M ²
PLANTA BAJA	
SUPERFICIE CONSTRUIDA	199.89M ²
PLANTA PISO	
SUPERFICIE CONSTRUIDA	97.69M ²
SUPERFICIE TOTAL	294.30 M²

CUADRO DE SUPERFICIES PLANTA BAJA						
ESPANCHA	SUP. UTIL	SUP. VENT	SUP. U.M.	DIAMET.	ALTURA	
SALA/COM-EDOR	86.23 M ²	5.50 M ²	11.03 M ²	5.50 M	3.00 M	
RECP-LAVABORIO	4.80 M ²	1.00 M ²	3.50 M ²	3.00 M	2.00 M	
DORMITORIO 1	14.00 M ²	0.75 M ²	0.75 M ²	1.00 M	2.00 M	
BAÑO	2.00 M ²	0.75 M ²	0.75 M ²	1.00 M	2.00 M	
RECCION	8.50 M ²	0.00 M ²	4.00 M ²	2.00 M	2.00 M	
DISTRIBUCION	10.60 M ²	0.40 M ²	16.00 M ²	3.40 M	2.00 M	
DORMITORIO 2	18.35 M ²	1.00 M ²	3.00 M ²	3.40 M	2.00 M	
BAÑO 1	7.60 M ²	1.00 M ²	1.00 M ²	0.40 M	2.00 M	
DORMITORIO 3	25.45 M ²	1.00 M ²	3.00 M ²	3.00 M	2.00 M	
SUPERFICIE TOTAL	170.28 M²					



Ctra, Jesus 101, Edif Centro, Planta Baja, Local 5,
07819 Jesus, Ibiza, Spain

Phone: +34 604 190 540 / 871 030 774

E-Mail: info@cw-ibiza.de

Website: www.cw-ibiza.de