

## Land with project of 12 apartments of 60 m2 each with a total of 703 m2 frontline



**Price: 1.270.000 €**

### GENERAL INFORMATION

|                          |              |                        |                         |
|--------------------------|--------------|------------------------|-------------------------|
| Property Ref:            | CW-D-TM-1275 | Category:              | Land, Hotel             |
| Location:                | San Antonio  | Area:                  | San Antonio De Portmany |
| N. Bedroom:              | 36           | N. Bathroom:           | 36                      |
| M <sup>2</sup> Property: | 1100         | M <sup>2</sup> Inside: | 703                     |



This property is not for sale until the energy certificate has not been submitted.

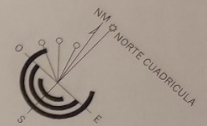
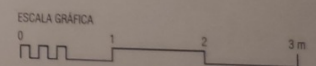
### DESCRIPTION

Land with project of 12 apartments of 60 m2 each with a total of 703 m2 built at 60 m from the sea, the project is submitted to the town hall and is awaiting approval. The project is of 12 apartments with parking and communal pool and is divided into 4 blocks of first floor, 1st floor and 2nd floor, it is a very exclusive property.

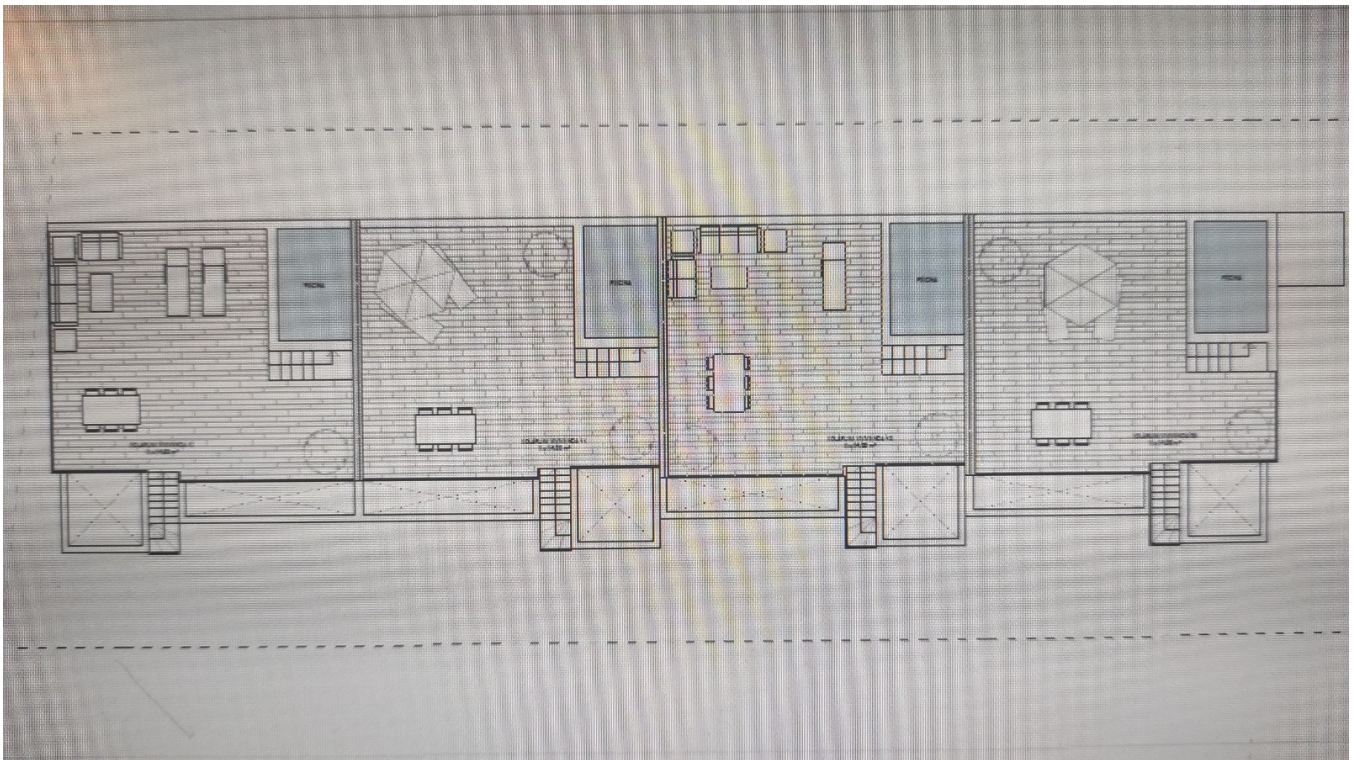
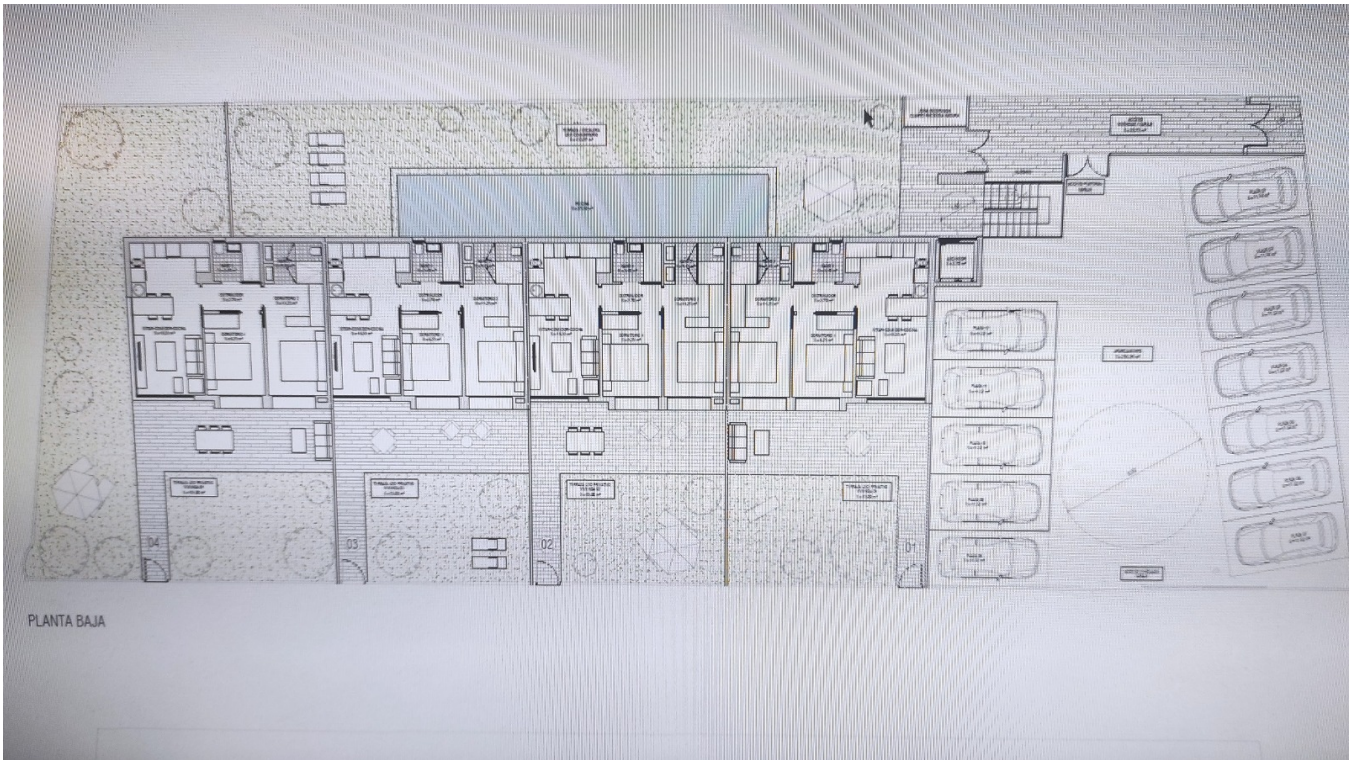




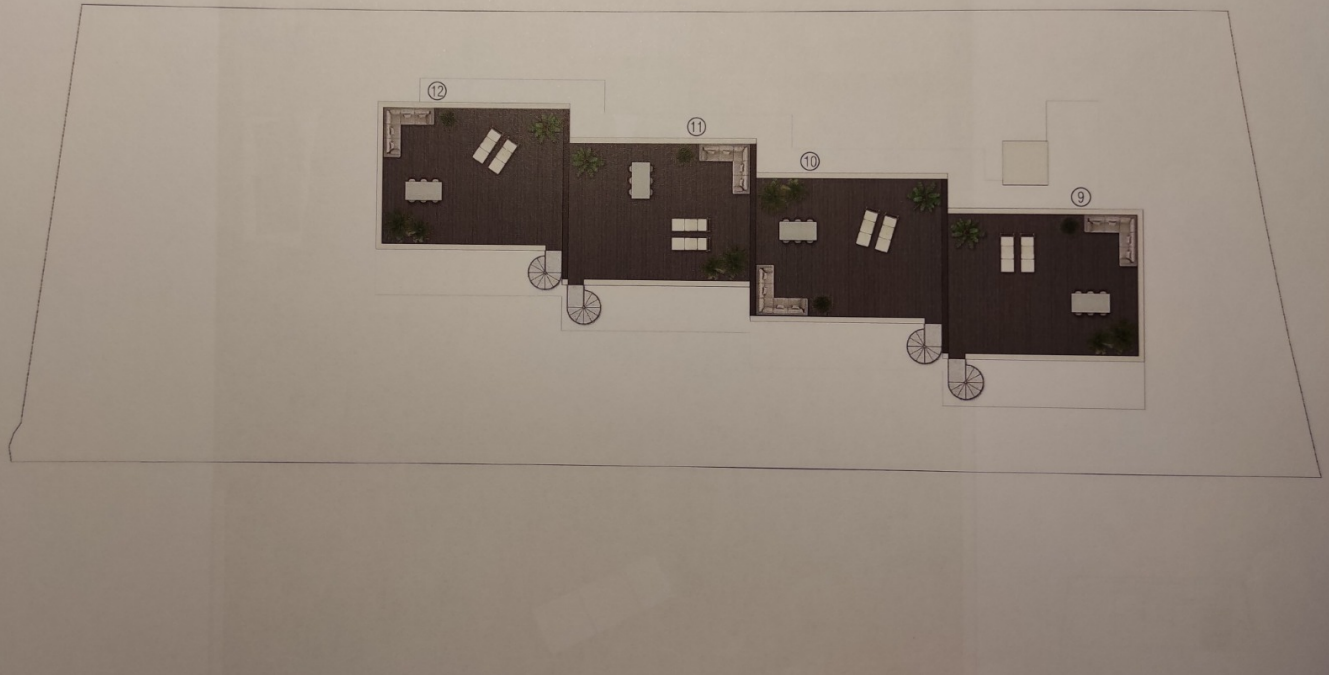
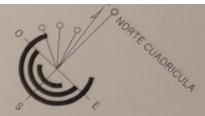












| EDIFICABILIDAD                 |  |                                      |                    |
|--------------------------------|--|--------------------------------------|--------------------|
| P. BAJA                        |  | Edificación (100%)                   | 229,80 m²          |
|                                |  | Cuerpos voladizos semicerrados (50%) | 21,25/2 = 10,63 m² |
|                                |  | TOTAL PLANTA BAJA                    | 240,43 m²          |
| P. PRIMERA                     |  | Edificación (100%)                   | 229,80 m²          |
|                                |  | Cuerpos voladizos semicerrados (50%) | 7,08/2 = 3,54 m²   |
|                                |  | TOTAL PLANTA PRIMERA                 | 233,34 m²          |
| P. SEGUNDA                     |  | Edificación (100%)                   | 333,20 m²          |
|                                |  | TOTAL PLANTA SEGUNDA                 | 229,60 m²          |
| TOTAL EDIFICABILIDAD           |  |                                      | 703,57 m²          |
| NORMATIVA 1.100,80 x 0.7 m²/m² |  |                                      | 777,56 m²          |

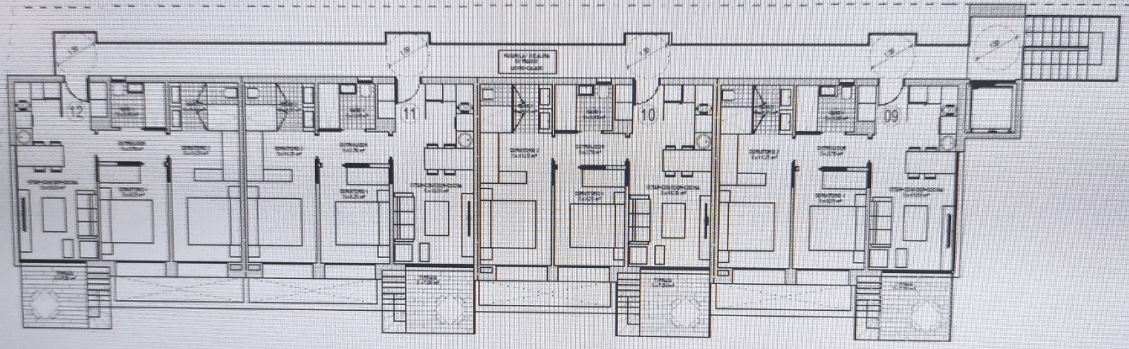




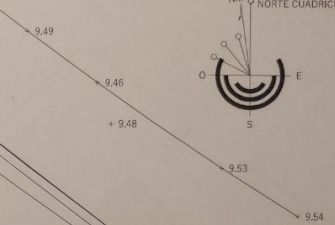
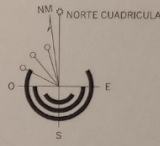
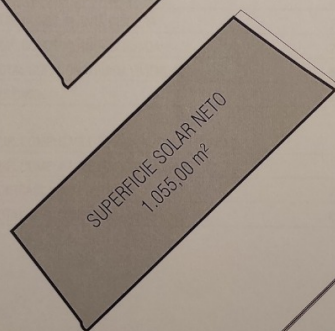
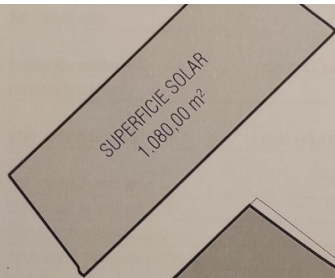
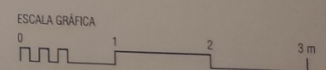
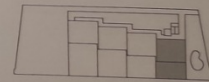
ESCALA GRÁFICA

0 1 2 3 4 5

10 m



PLANTA SEGUNDA







Ctra, Jesus 101, Edif Centro, Planta Baja, Local 5,  
07819 Jesus, Ibiza, Spain

Phone: +34 604 190 540 / 871 030 774

E-Mail: [info@cw-ibiza.de](mailto:info@cw-ibiza.de)

Website: [www.cw-ibiza.de](http://www.cw-ibiza.de)