

## Spectacular Seaview Plot in Can Germa



**Price: 1.390.000 €**

### GENERAL INFORMATION

Property Ref:	CW-D-TO-149	Category:	Villas, Luxury Houses, Land
Location:	Sant Antoni de Portmany	Area:	Can Germa
N. Bedroom:	5	N. Bathroom:	5
M <sup>2</sup> Property:	883	M <sup>2</sup> Inside:	326



This property is not for sale until the energy certificate has not been submitted.

### DESCRIPTION

This exquisite project features a splendid 883-square-meter plot with a swift 30-day permit for a 326-square-meter living space, complemented by an additional 248 square meters in the basement and a generous 60-square-meter pool.

The capacious garage effortlessly accommodates up to four vehicles, while the outdoor area beckons with a dedicated barbecue space and a meticulously landscaped garden.

Boasting 5 bedrooms and bathrooms, the home's design is a testament to its inherent elegance and

sophistication. What truly distinguishes this property is the awe-inspiring panoramic sea views, making it a rare gem among properties. Perched above Cala Salada, it enjoys close proximity to the beach, offering a peaceful and serene ambiance, epitomizing absolute tranquility and unforgettable sea vistas.

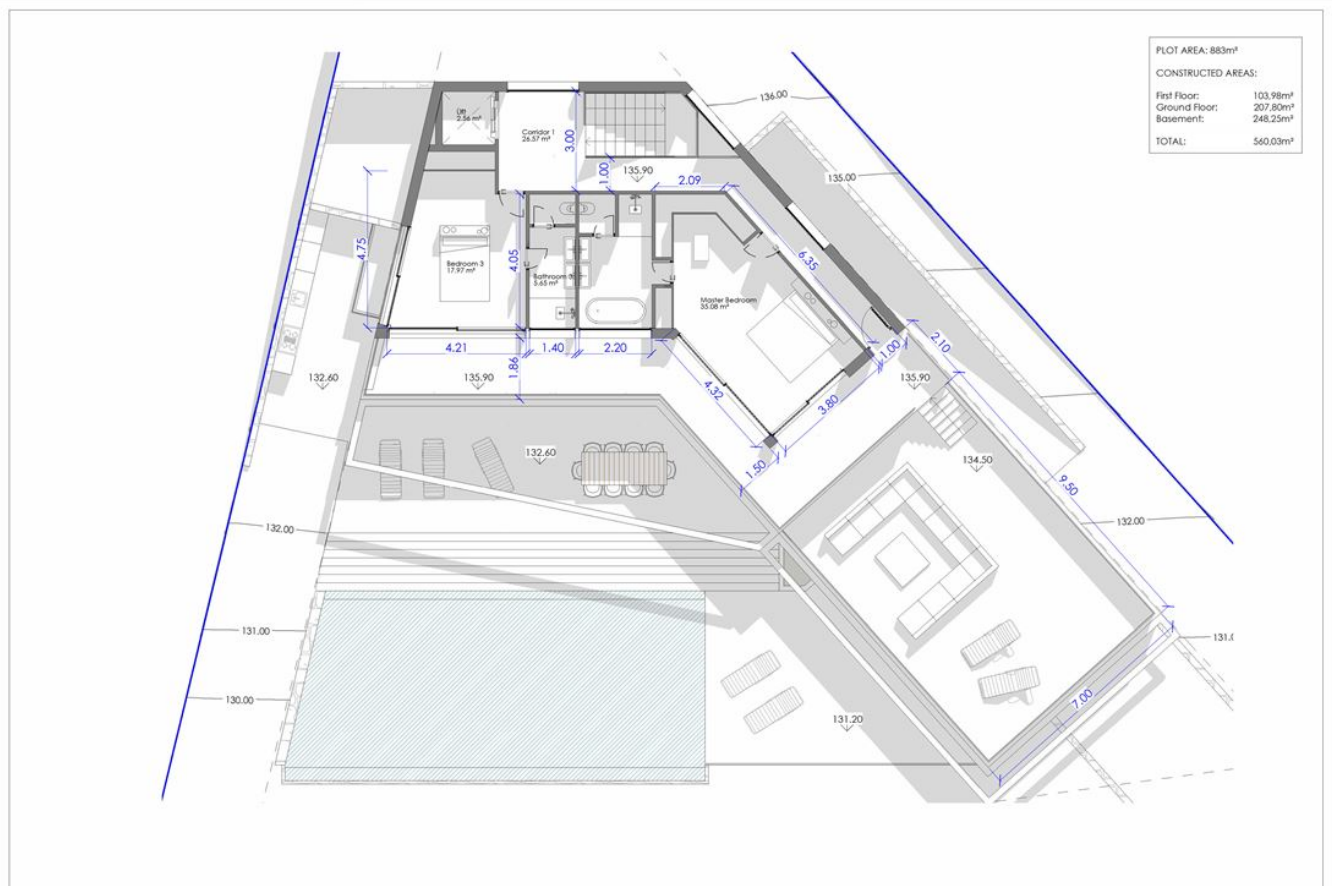
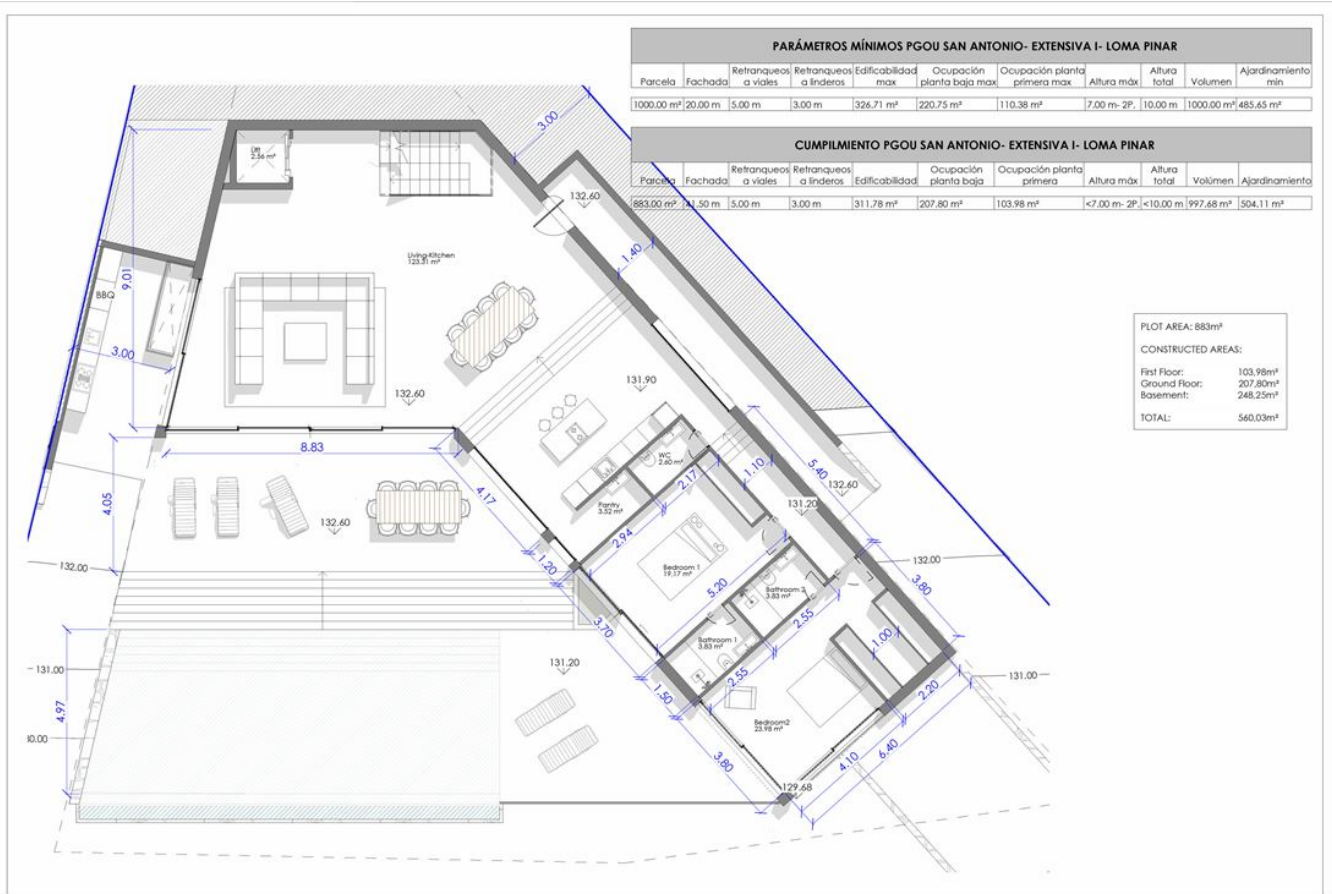




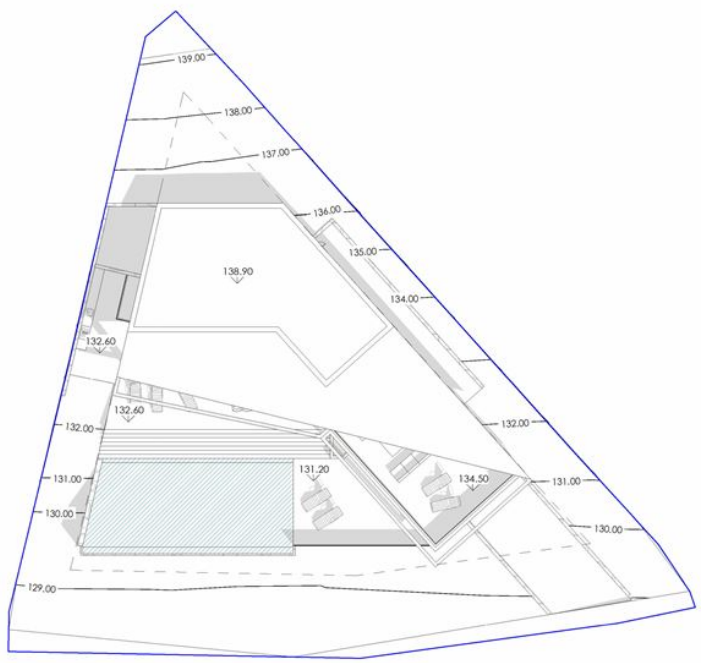
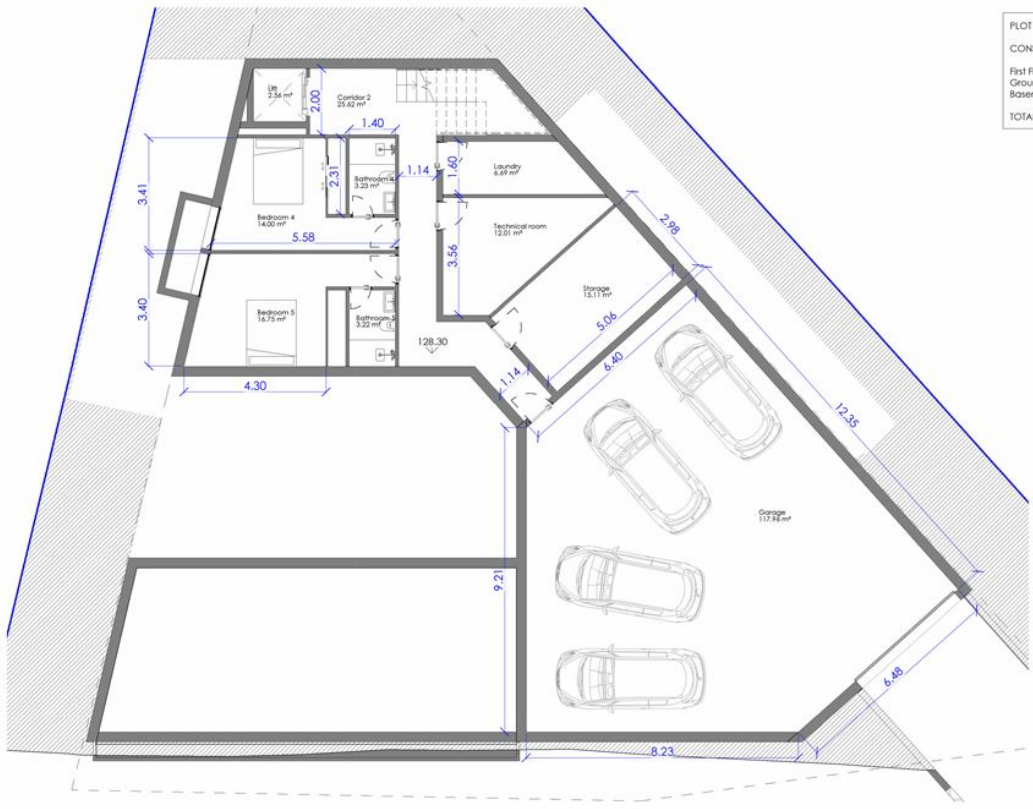








PLOT AREA: 883m <sup>2</sup>	
CONSTRUCTED AREAS:	
First Floor:	103.98m <sup>2</sup>
Ground Floor:	207.80m <sup>2</sup>
Basement:	248.25m <sup>2</sup>
<b>TOTAL:</b>	<b>560.03m<sup>2</sup></b>







Ctra, Jesus 101, Edif Centro, Planta Baja, Local 5,  
07819 Jesus, Ibiza, Spain

Phone: +34 604 190 540 / 871 030 774  
E-Mail: [info@cw-ibiza.de](mailto:info@cw-ibiza.de)  
Website: [www.cw-ibiza.de](http://www.cw-ibiza.de)

---