

Plot in the countryside near San Jordi with license to build a house in Blakstad style



Price: 1.350.000 €

GENERAL INFORMATION

Property Ref:	CW-N-FER-135	Category:	Land
Location:		Area:	Sant Jordi
N. Bedroom:	4	N. Bathroom:	4+1
M ² Property:		M ² Inside:	272



This property is not for sale until the energy certificate has not been submitted.

DESCRIPTION

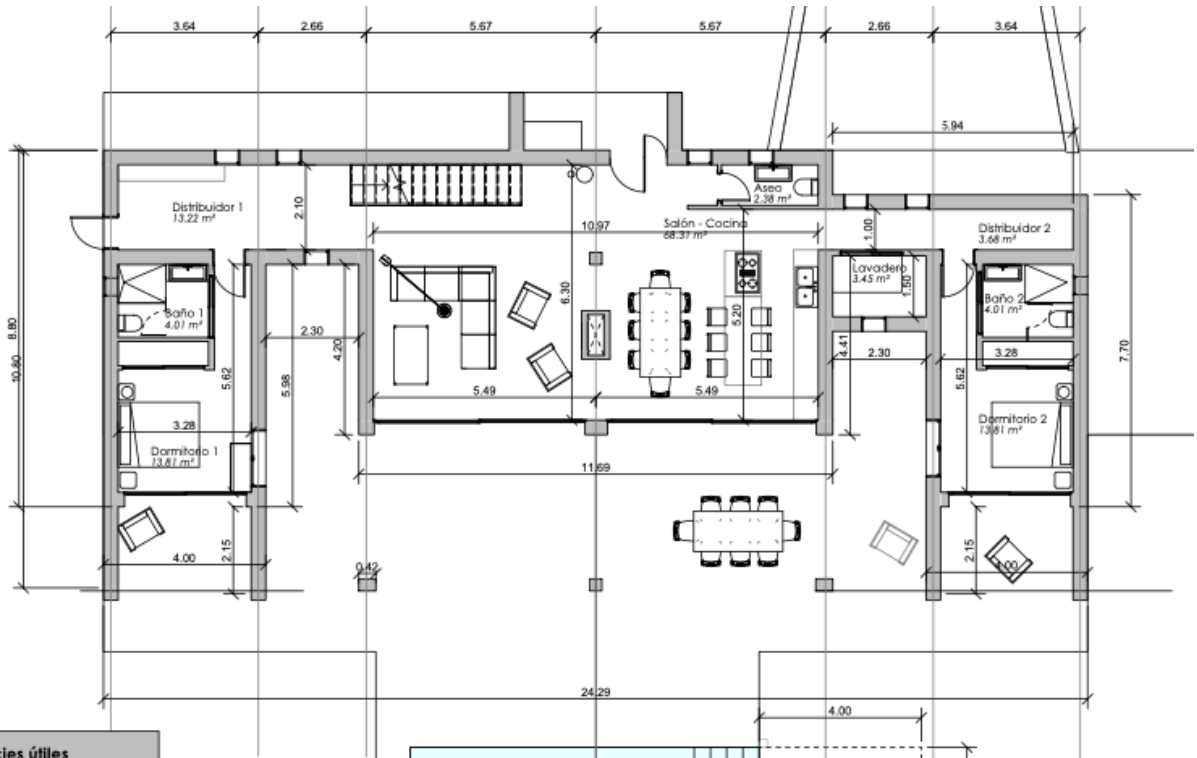
The plot is 19.500m² and the approved project foresees 467m² built with 195m² of basement, 190 m² on the ground floor and 82 1st floor, plus terraces, porches and a swimming pool of 34 m².

From the property there are unobstructed views of the sea and D'Alt Villa in the distance.









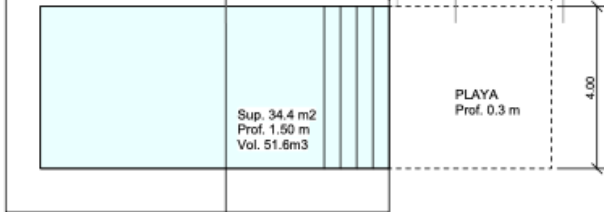
Superficies útiles

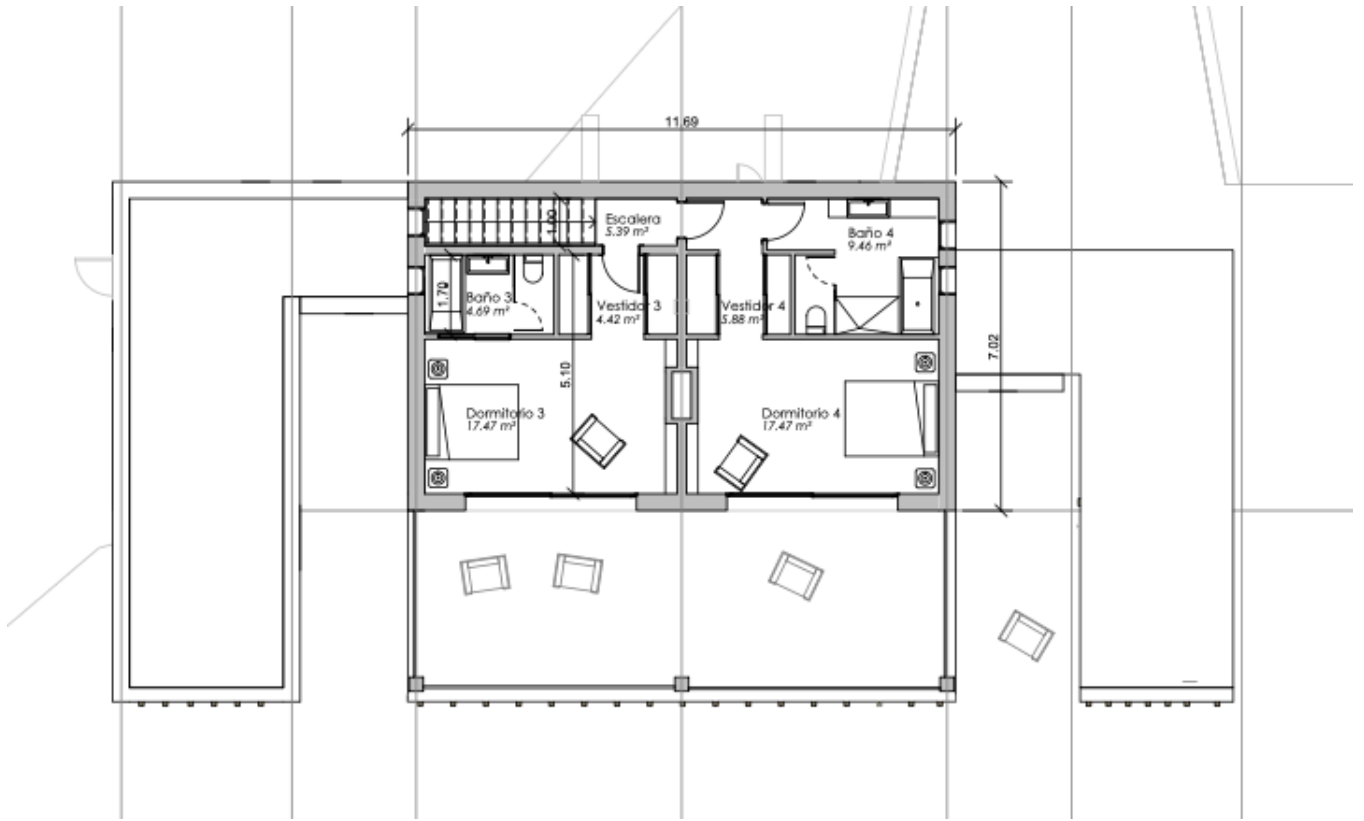
Nombre	Área	Nivel
--------	------	-------

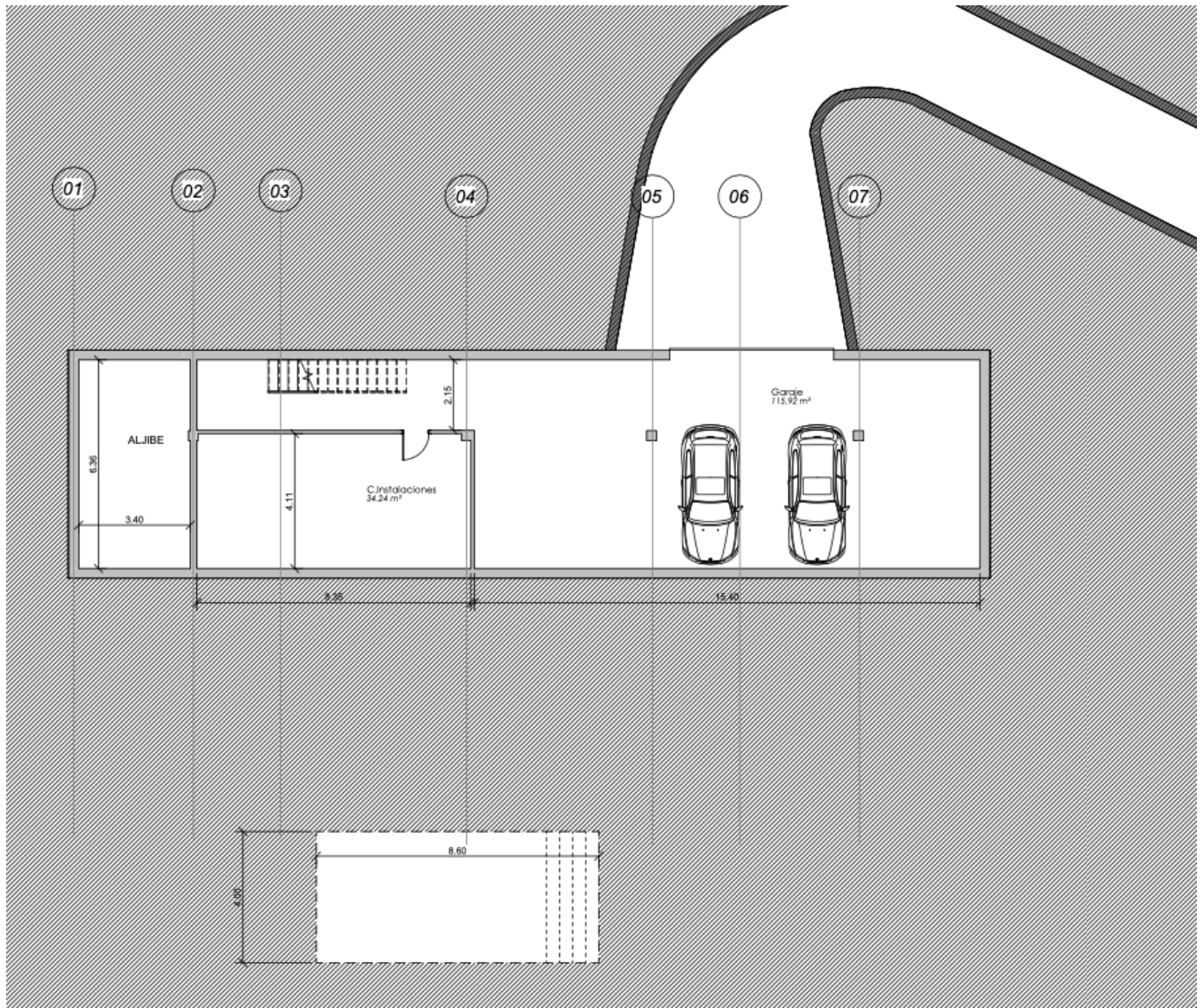
C.Instalaciones	34.24 m ²	Planta Sótano
Garaje	115.92 m ²	Planta Sótano
150.17 m²		

Aseo	2.38 m ²	Planta Baja
Baño 1	4.01 m ²	Planta Baja
Baño 2	4.01 m ²	Planta Baja
Distribuidor 1	13.22 m ²	Planta Baja
Distribuidor 2	3.68 m ²	Planta Baja
Dormitorio 1	13.81 m ²	Planta Baja
Dormitorio 2	13.81 m ²	Planta Baja
Lavadero	3.45 m ²	Planta Baja
Salón - Cocina	68.31 m ²	Planta Baja
126.70 m²		

Baño 3	4.69 m ²	Planta Primera
Baño 4	9.46 m ²	Planta Primera
Dormitorio 3	17.47 m ²	Planta Primera
Dormitorio 4	17.47 m ²	Planta Primera
Escalera	5.39 m ²	Planta Primera
Vestidor 3	4.42 m ²	Planta Primera
Vestidor 4	5.88 m ²	Planta Primera
64.77 m²		
341.64 m²		





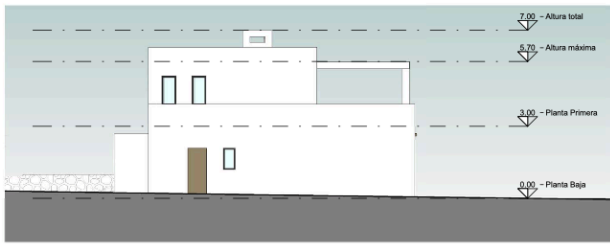




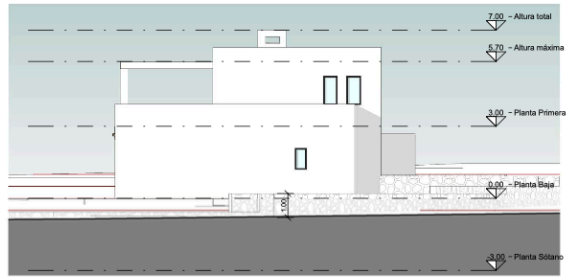
ALZADO NORTE



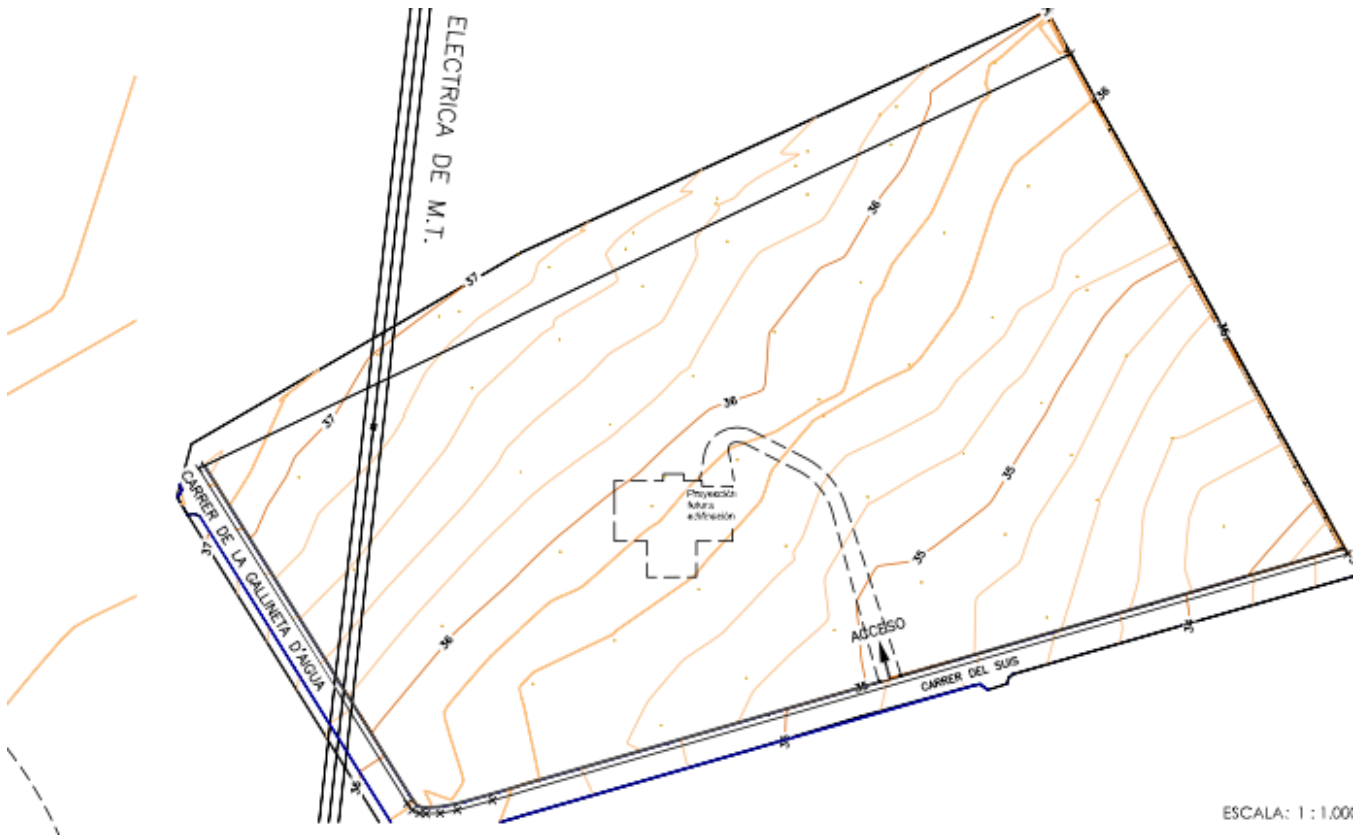
ALZADO SUR



ALZADO OESTE



ALZADO ESTE



ESCALA: 1 : 1.000



Ctra, Jesus 101, Edif Centro, Planta Baja, Local 5,
07819 Jesus, Ibiza, Spain

Phone: +34 604 190 540 / 871 030 774
E-Mail: info@cw-ibiza.de
Website: www.cw-ibiza.de
